

abbotFox



Spixworth, NR12  
Guide £190,000

“

We are a team of genuine individuals who hold a deep passion for both property and marketing. Collectively, we bring over 70 years of experience in the property market of Norfolk and Suffolk. Our affection for both counties runs deep, and we are enthusiastic about sharing our passion with you.

Colin McKenzie | **Branch Partner**







## THE DETAIL \_\_\_\_\_

abbotFox presents St Mary's Court.

St Mary's Court is a new retirement development of 23 two and three-bedroom bungalows in a range of sizes and styles set on the edge of the village of Spixworth.

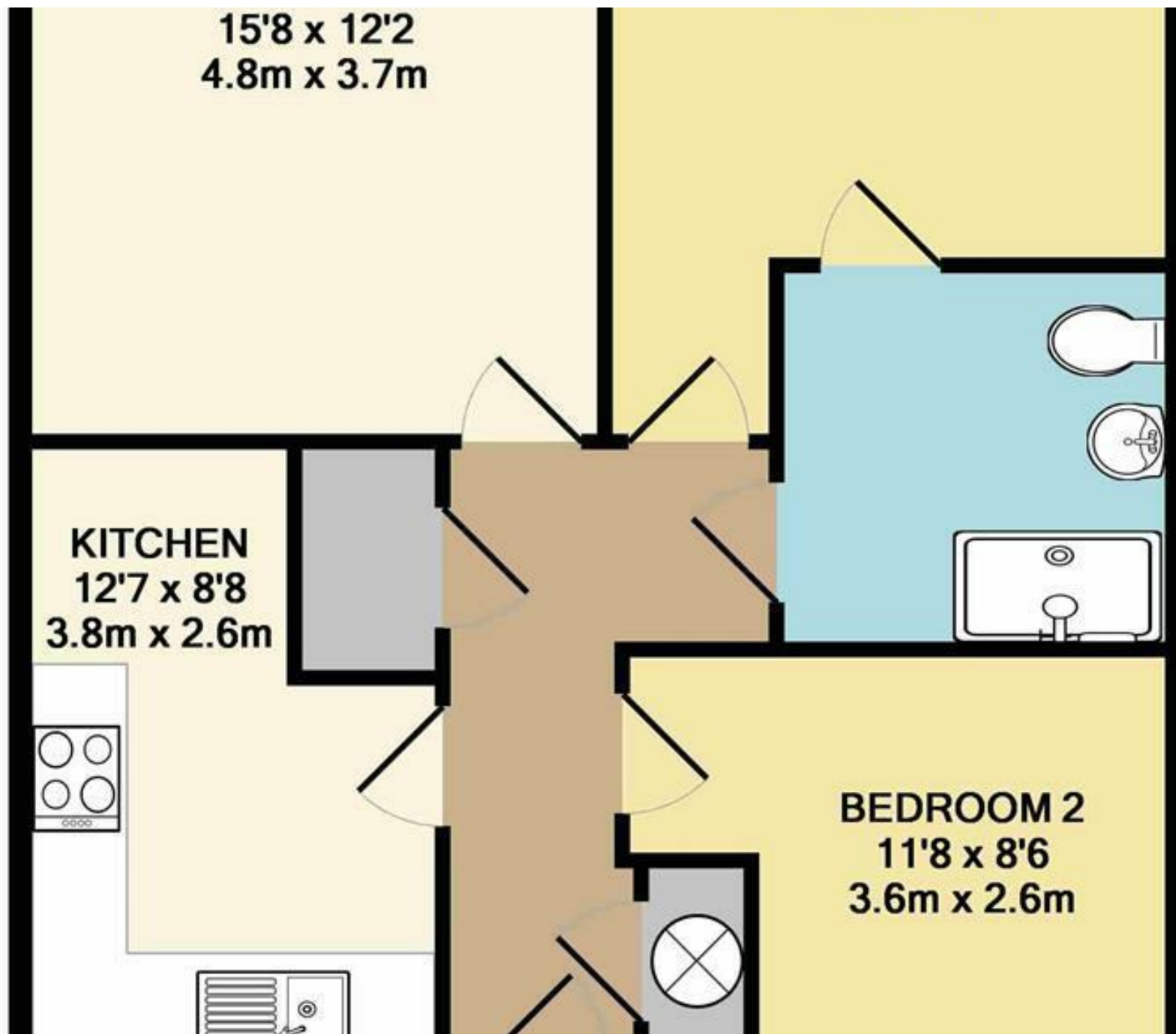
Accommodation comprises of fitted kitchens featuring integrated electric ovens, gas hobs, combination washer dryers and dishwashers. Accommodation further benefits from modern three-piece bathrooms and ensembles with heated towel rails and walk-in showers. All of the bungalows offer private gardens and enjoy access to parking. The development is situated a short 5 miles from Norwich with regular bus services into the heart of the city.

St Mary's Court offers a village community lifestyle whilst maintaining strong links to the positives of city living. Set out in a courtyard style the development promotes that sought after community feel. Further peace and security is an added benefit of this quiet cul-de-sac location.



## THE HIGHLIGHTS \_\_\_\_\_

- Two & three bedroom retirement bungalows
- Ensuites in three bedroom bungalows
- Part exchange considered
- Private gardens
- Off road parking
- Community living



*Let's talk*

01603 660000

[sales@abbotfox.co.uk](mailto:sales@abbotfox.co.uk)

@abbotfox

EPC RATING -

Disclaimer – In accordance with the Property Misdescriptions Act, the company abbotFox gives notice that all descriptions, references to condition, necessary permissions for use and other details are given in good faith and believed to be correct, but any purchaser should not rely on them as statements of fact, and must satisfy themselves by inspection or other means, as to their accuracy.